

REVISION QUESTION PAPER (SET-1)

BIOLOGY

CHAPTER- LIFE PROCESSES

Q.1) Answer the question by selecting the appropriate option given below:

Assertion(A): Bile is essential for digestion of fats.

Reason(R): Bile juice contains fat digesting enzymes.

- (a) Both A and R are true, and R is the correct explanation of A.
- (b) Both A and R are true, and R is not the correct explanation of A.
- (c) A is true but R is false.
- (d) A is false but R is true.

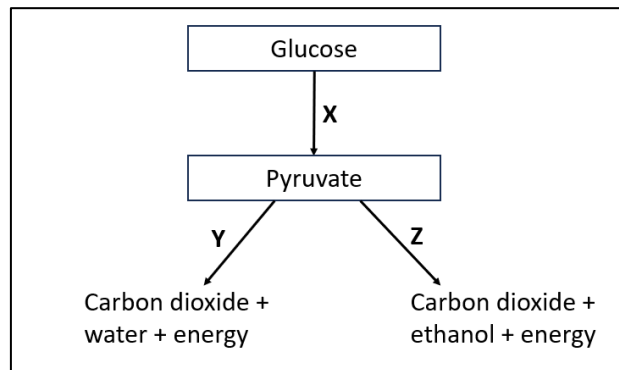
[1]

Q.2) What happens to the rate of photosynthesis in each of the following situations?

- (a) Cloudy days
- (b) Stomata gets blocked due to dust.

[2]

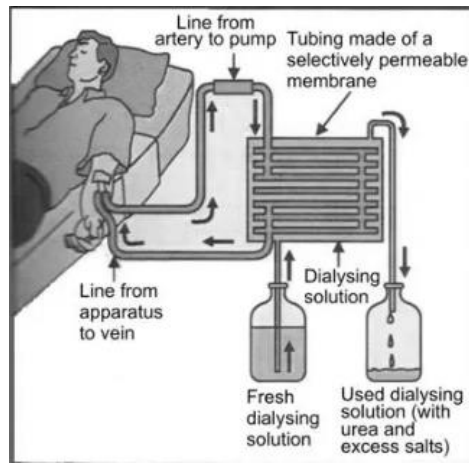
Q.3)



- (a) Where do processes X and Y take place in a cell?
- (b) Which process out of these takes place in yeast during fermentation?
- (c) In which part of the human body and under what condition does process Z take place?

[3]

Q.4) The figure shown below represents a procedure to remove waste products from blood of patients with kidney failure. During the procedure, the patient's blood is cleaned by filtration through a series of tubes lined by semi permeable membrane before being returned to the patient's body.



Attempt either subpart A or B.

A. How does the dialysing solution help in removing wastes from the patient's blood?

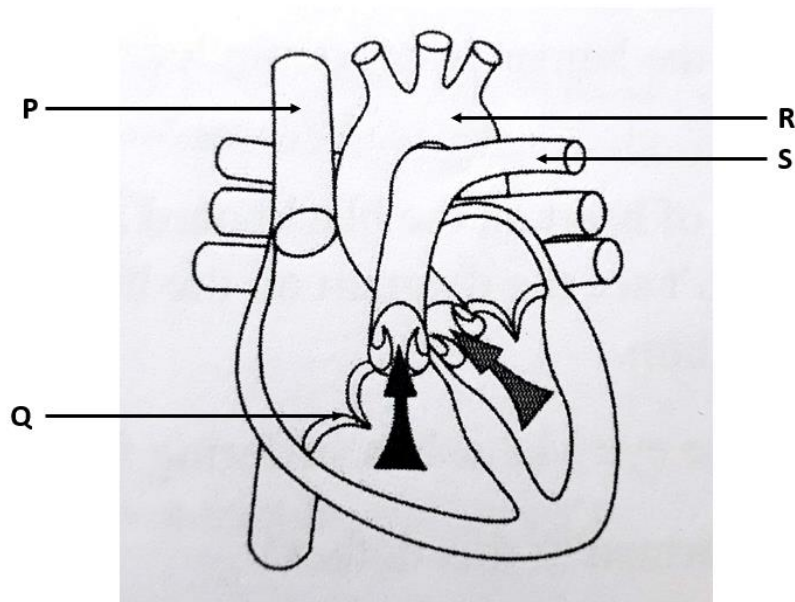
OR

B. Mention two factors that may lead to reduced activity of kidneys. Why do you think kidney failure can be fatal for a person? (2)

C. Name the procedure shown in the figure above. (1)

D. How is this procedure different from the function of the kidneys? (1)

Q.5) The figure given below shows a human heart. The heart is a muscular organ which is divided into four different chambers. A dividing wall separates the right and left side of the heart. Study the figure given below and answer the questions.



(i) Which chambers of the heart are in contraction phase? (1)

(ii) Why is the separation of the right side and the left side of the heart useful in humans? (2)

(iii) Identify and name the blood vessel that carries deoxygenated blood from heart to the lungs. (1)

(iv) State the function of structure Q. (1)
